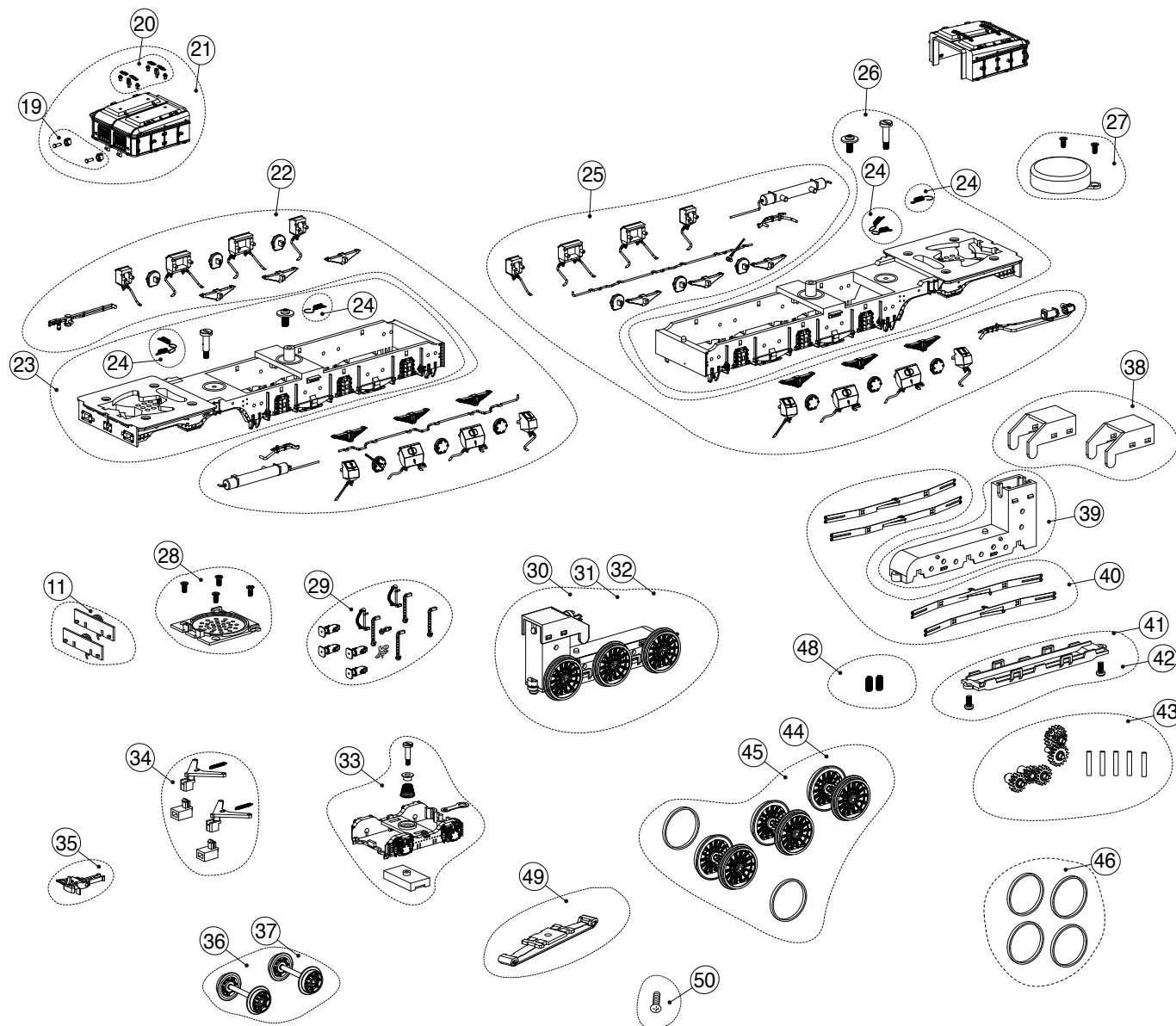


## Locomotora eléctrica RENFE 7200

### LISTA DE RECAMBIOS / LIST OF SPARES

| Número<br>Number | Descripción<br>Description   | Ref. repuesto<br>Spare part ref. |
|------------------|--|----------------------------------|
| 1                | Carrocería<br>Body shell   | ER3016/01                        |
| 2                | Set pantógrafos<br>Pantographs set                                 | ER3016/02                        |
| 3                | Argollas<br>Rings  | ER3016/03                        |
| 4                | Cubierta techo<br>Roof cover                                       | ER3016/04                        |
| 5                | Accesorios techo<br>Cover accesories                               | ER3016/05                        |
| 6                | Accesorios cabina<br>Cabin accesories                              | ER3016/06                        |
| 7                | Faro principal<br>Main light                                       | ER3016/07                        |
| 8                | Pasamanos<br>Handrail  | ER3016/08                        |
| 9                | Tomas de contacto carrocería<br>Bodyshell currents pick ups        | ER3016/09                        |
| 10               | Cabina con difusores<br>Cabin with diffusers                       | ER3016/10                        |
| 11               | Set iluminación<br>Lighting set                                    | ER3016/11                        |
| 12               | Circuito impreso<br>PCB  | ER3016/12                        |
| 13               | Motor<br>Motor   | ER3016/13                        |
| 14               | Sinfin<br>Worm gear  | ER3016/14                        |
| 15               | Cardan<br>Cardan   | ER3016/15                        |
| 16               | Set escaleras<br>Stairs set  | ER3016/16                        |
| 17               | Bloque bastidor<br>Frame   | ER3016/17                        |
| 18               | Set tuberías<br>Pipes set  | ER3016/18                        |
| 19               | Set Focos<br>Lights set  | ER3016/19                        |
| 20               | Tensores capó<br>Springs   | ER3016/20                        |
| 21               | Capó<br>Hood   | ER3016/21                        |
| 22               | Accesorios chasis bogie I<br>Bogie chassis accesories I            | ER3016/22                        |
| 23               | Chasis bogie I<br>Bogie chassis I                                  | ER3016/23                        |
| 24               | Muelles retorno bogie<br>Bogie return springs                      | ER3016/24                        |
| 25               | Accesorios chasis bogie II<br>Bogie chassis accesories II          | ER3016/25                        |
| 26               | Chasis bogie II<br>Bogie chassis II                                | ER3016/26                        |
| 27               | Caja resonancia<br>Speaker box                                     | ER3016/27                        |
| 28               | SopORTE altavoz - Tapa enganche<br>Speaker support - Coupler cover | ER3016/28                        |
| 29               | Topes, enganches y mangueras<br>Buffers, couplers and hoses        | ER3016/29                        |
| 30               | Bogie completo DC<br>Bogie DC                                      | ER3016/30                        |
| 31               | Bogie completo AC<br>Bogie AC                                      | ER3017/31                        |



## Locomotora eléctrica RENFE 7200

### LISTA DE RECAMBIOS / LIST OF SPARES

| Número<br>Number | Descripción<br>Description  | Ref. repuesto<br>Spare part ref. |
|------------------|---|----------------------------------|
| 32               | Bogie completo AC con patín<br>Bogie with pick up shoe - AC                         | ER3017/32                        |
| 33               | Carretón de guiado<br>Pony truck  | ER3016/33                        |
| 34               | Set de brazos enganche<br>Coupler arm lid   | ER3016/34                        |
| 35               | Enganche<br>Coupler   | ER058                            |
| 36               | Set ruedas carretón DC<br>Wheel set DC  | ER3016/36                        |
| 37               | Set ruedas carretón AC<br>Wheel set AC  | ER3017/37                        |
| 38               | Tapa sinfín<br>Worm gear cover  | ER3016/38                        |
| 39               | Caja de engranajes<br>Gears box   | ER3016/39                        |
| 40               | Tomas de corriente<br>Wheels pick up  | ER3016/40                        |
| 41               | Tapa bogie DC<br>Bogie lid DC   | ER3016/41                        |
| 42               | Tapa bogie para patín AC<br>Bogie lid AC  | ER3017/42                        |
| 43               | Set engranajes<br>Gears set   | ER3016/43                        |
| 44               | Set de ruedas de radios DC<br>Spoked wheels DC                                      | ER3016/44                        |
| 45               | Set de ruedas de radios AC<br>Spoked wheels AC                                      | ER3017/45                        |
| 46               | Aros de adherencia<br>Rubber tyres  | ER3016/46                        |
| 47               | Bolsa accesorios<br>Accessories bag   | ER3016/47                        |
| 48               | Suspensión ejes<br>Axle springs   | ER3016/48                        |
| 49               | Patín AC<br>Pick up shoe  | ER6850A                          |
| 50               | Tornillo Patín AC<br>AC pick up shoe screw  | ER6851                           |
| 51               | Maquinista<br>Driver  | ER34074                          |
| 52               | Decoder multiprotocolo 21 pin<br>21-pin multiprotocol decoder                       | ER3017/200RENF                   |
| 53               | Decoder multiprotocolo con sonido 21 pin<br>21-pin multiprotocol decoder with sound | ER301S/7200RENF                  |