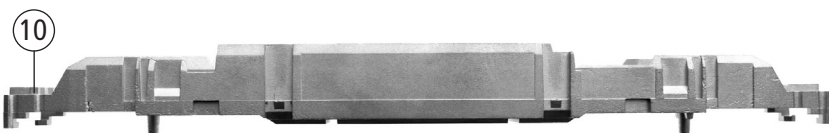
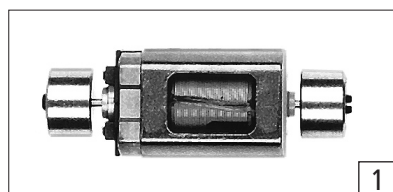
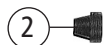
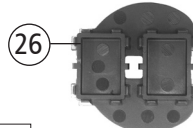
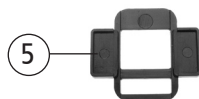
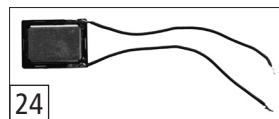
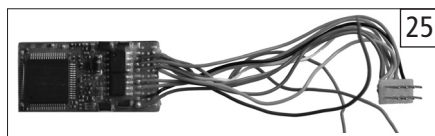
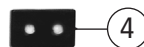
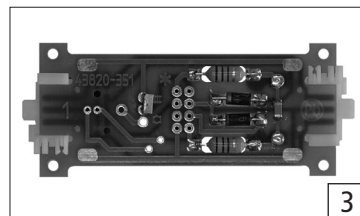
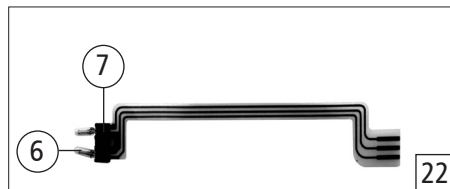
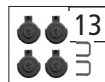

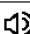
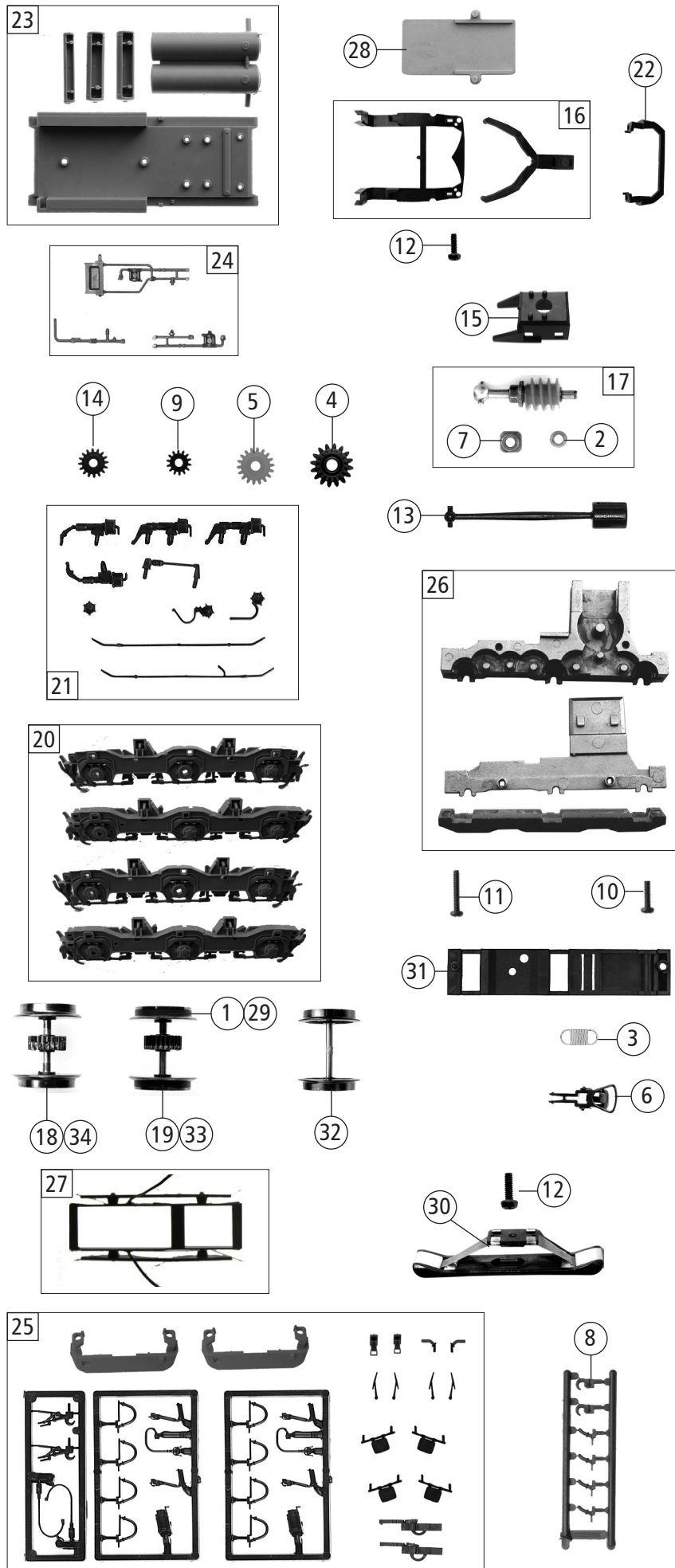


12 o. Abb. / no ill.
Tafelsatz lackiert
Board coated



62730		RENFE	D 333	=	
62731				=	
68731				~	
Pos. Nr. Pos.no.	Beschreibung Description			Art.-Nr. Art.no.	Preisgruppe Price bracket
1	Motor Motor			85111	28
2	Kardanschale kurz 1,5mm Cardan bearing short 1,5mm			87129	4
3	Motorplatine kpl. Printed circuit motore ass.			126703	19
4	Brückenstecker Connector			100644	6
5	Motorabdeckung Engine cover			106116	3
6	Drahtlampe 16V Light bulb 16V			108616	8
7	Lampenhalter Bulb holder			109879	3
8	GF-Schraube M 2x5 GF-screw M 2x5			114966	3
9	TS-Fenster Window			120340	12
10	Grundrahmen Base frame			117602	12
11	Gehäuse komplett Betr.nr. D 333 019-8 Body assembly Loco no. D 333 019-8			133270	31
12	Tafelsatz lackiert Board coated			133272	12
13	TS-Scheinwerfergehäuse u. Griffstangen vorn Part set headlight body a. handrail front			124550	8
14	E-Anschlußkabel E-connecting cable			124551	3
15	TS-Fenster u. Linsen geprägt Part set window a. lens printed			124552	12
16	Puffer flach links Buffer flat left			124553	3
17	Puffer flach rechts Buffer flat right			124554	3
18	TS-Leiter Paret set ladder			124555	6
19	Führerstand komplett Drive cab assembly			124556	9
20	Griffstangensatz Handrail set			124557	11
21	TS-Dach lackiert Part set roof coated			124558	11
22	Lampenflexplatine Part set roof coated			200125	14
23	TS-Linsen u. Spitzenlicht Part set lens a. head light			133271	7
Sound 62731 u. 68731					
24	Lautsprecher Loudspeaker			129524	16
25	Sounddecoder Version Sounddecoder Version			129801	39
26	Lautsprechergehäuse loudspeaker			121507	3
27	Lautsprecherhaltebügel Loudspeaker holder			131214	5

Änderungen in Konstruktion und Ausführung vorbehalten
We reserve the right to change the construction and specification



62730	RENFE D 333	=	
62731		=	🔊
68731		~	🔊
Pos. Nr. Pos.no.	Beschreibung Description	Art.-Nr. Art.no.	Preisgruppe Price bracket
1	Hafringsatz 10Stk. 10,3-12,8mm Set with traction tires 10pieces 10,3-12,8mm	40069	---
2	Beilagscheibe 2.1 x 4 / 0.2 mm WWasher 2.1 x 4 / 0.2 mm	86108	3
3	Zugfeder Spring	86208	3
4	Schneckenrad doppelt Worm gear double	86419	6
5	Zahnrad Z=18 M=0,4 Gear Z=18 M=0,4	86460	3
6	Standardkupplung Standard coupling	89246	6
7	Lager f. Schneckenachse Bearing f. worm	89749	6
8	Attrappenrahmen klein Push in part set smal	107808	4
9	Zahnrad Z=14 Gear Z=14	111115	3
10	GF-Schraube M 1,6x6 GF-Screw M 1,6x6	114836	3
11	GF-Schraube M 1,6x8 GF-Screw M 1,6x8	115026	3
12	GF-Schraube M 1,6x5 GF-Screw M 1,6x5	115269	3
13	Kardanwelle Cardan shaft	117610	3
14	Zahnrad Z=16 schwarz Gear Z=16 black	117617	3
15	Schneckendeckel Worm cover	121285	4
16	TS - Fahrgestell Part set chassis	117604	5
17	Schneckensatz Worm set	124430	13
18	Radsatz m. Zahnrad o. Hafring Wheelset with gear without traction tyre	124434	11
19	Radsatz mit 2 Hafringen Wheelset with 2 traction tires	124435	12
20	TS-Blenden Part set bogie	124436	14
21	TS-Blende links u. rechts Part set bogie left a. right	124437	7
22	Schürze offen bedruckt - gelb Apron open printed - Yellow	124543	6
23	TS-Unterboden Part set chassis	124544	9
24	Rohrsatz Pipeset	124545	6
25	Zurüstbeutel Bag with accessories	124548	12
26	TS-Getriebe Part set gear	200130	12
27	Radkontaktbaugruppe Wheel contact building group	200131	8
28	Decoderhalter Decoder holder	121515	6
AC - Wechselstrom 68726 u. 68727			
29	Hafringsatz 10Stk. 10,3-12,4mm Set with traction tires 10pieces 10,3-12,4mm	40074	---
30	Schleifer Wiper	86031	14
31	Getriebeboden AC Gear bottom AC	117607	3
32	Radsatz o. Zahnrad o. Hafring Wheelset without gear without traction tyre	124451	10
33	Radsatz m. Zahnrad m. Hafring Wheelset w. gear w. traction tyre	124452	12
34	Radsatz m. Zahnrad o. Hafring Wheelset w. gear without traction tyre	124453	11