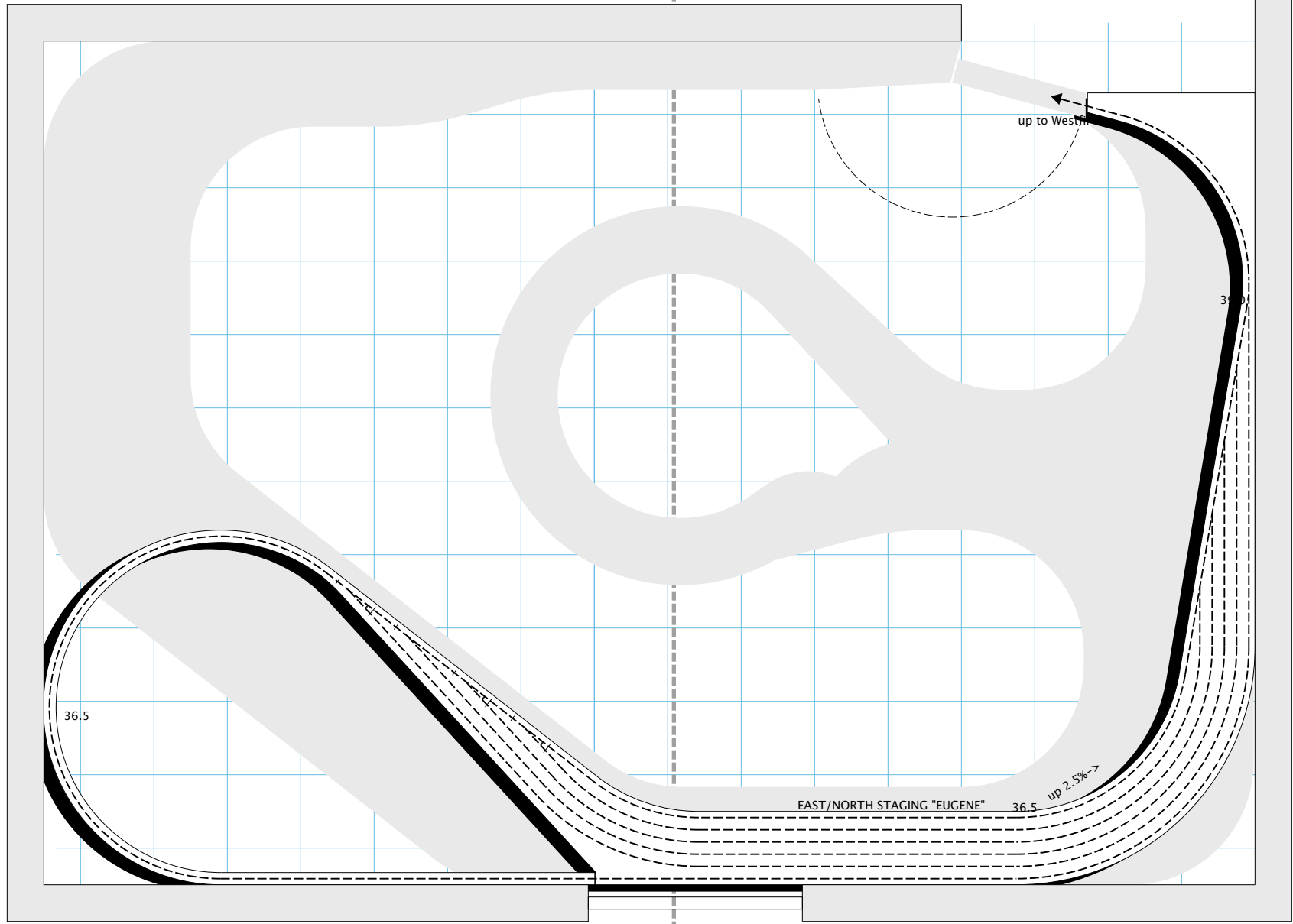


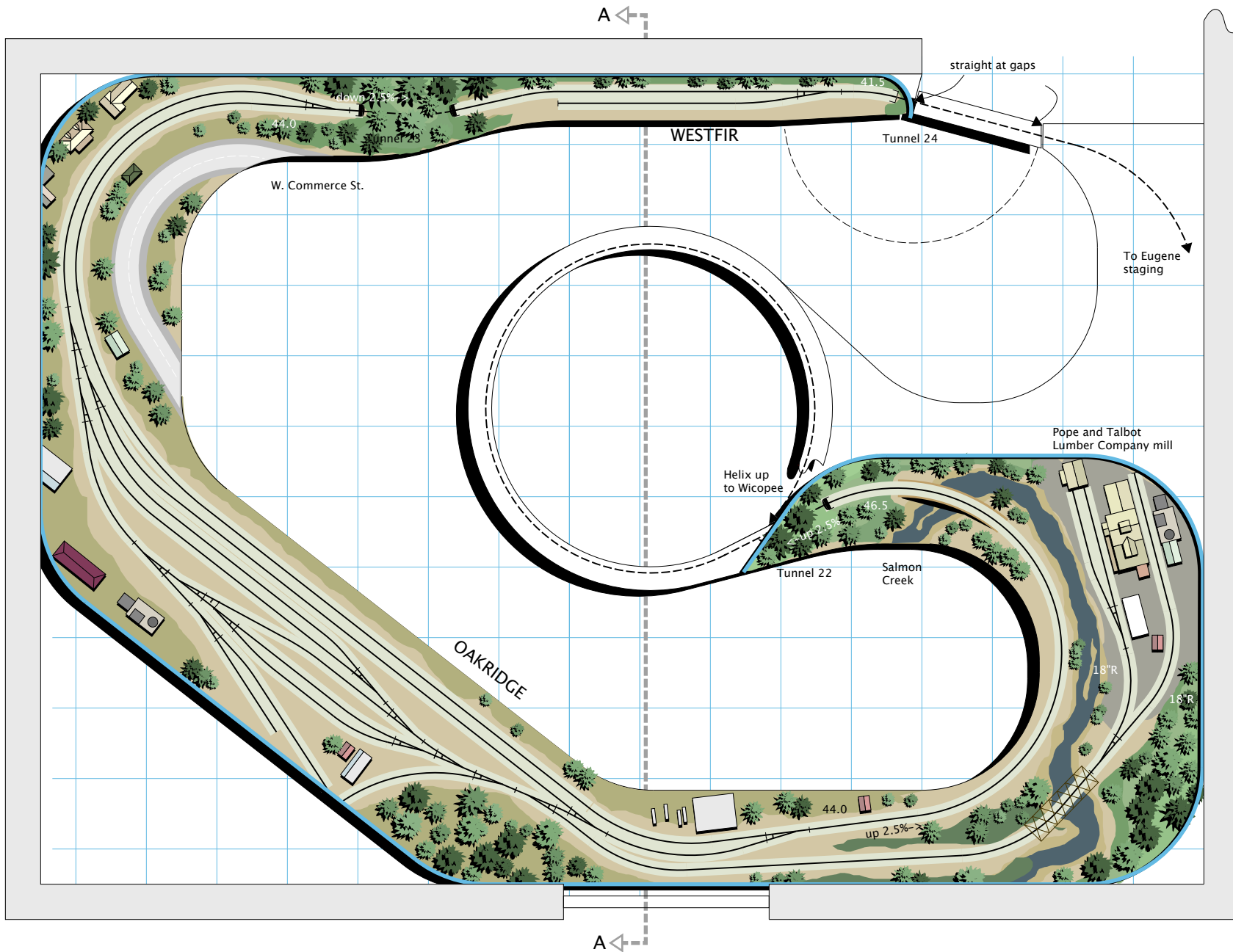
A ←



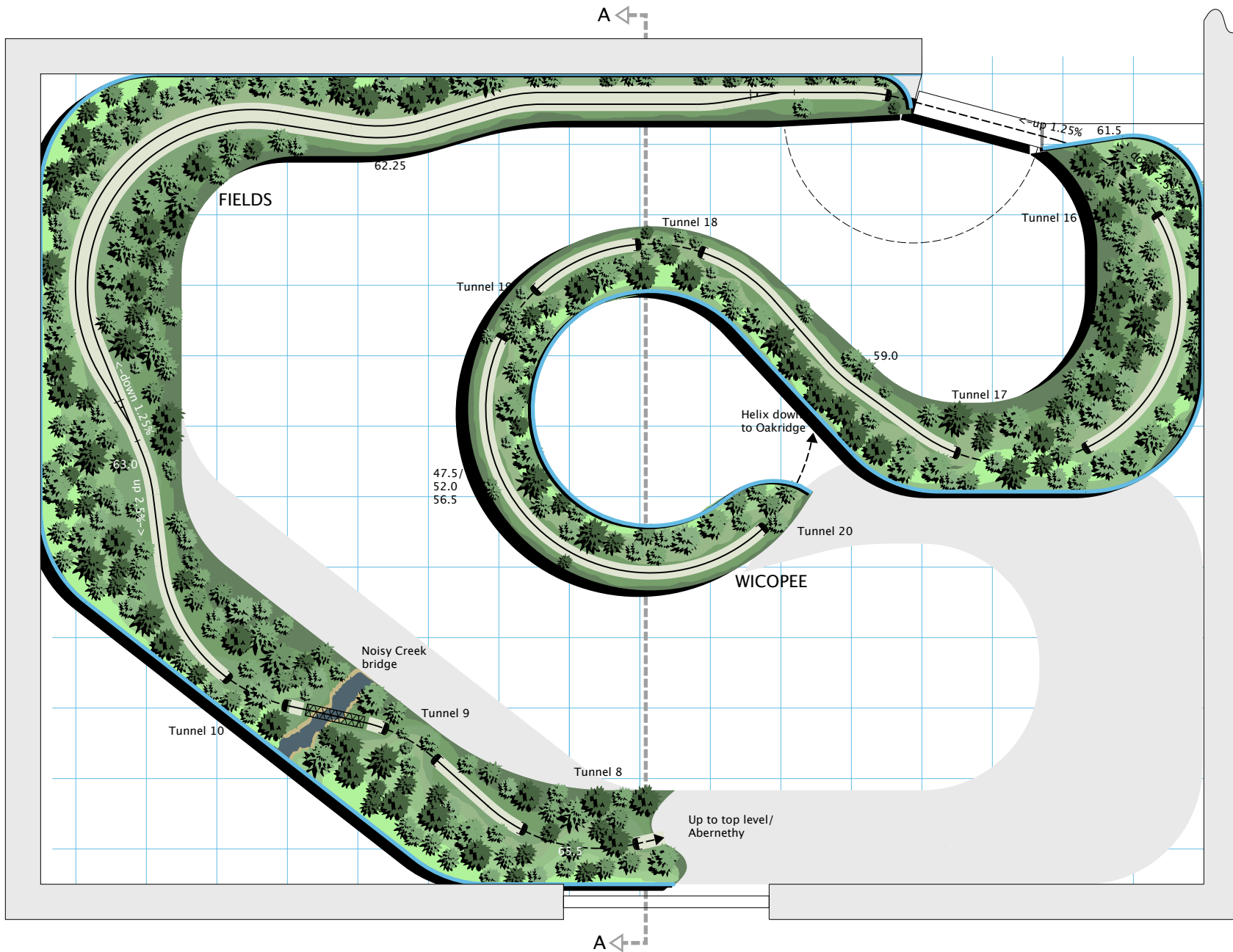
A ←

UP in the Cascades | *John Caffarelli* | *LOWER STAGING*  
HO Scale | minimum radius: mainline 28", industrial 18" all turnouts #6  
1/2"=1 foot

Designed by Robert W. Sprague  
[www.annapolisjunctionrr.com](http://www.annapolisjunctionrr.com)



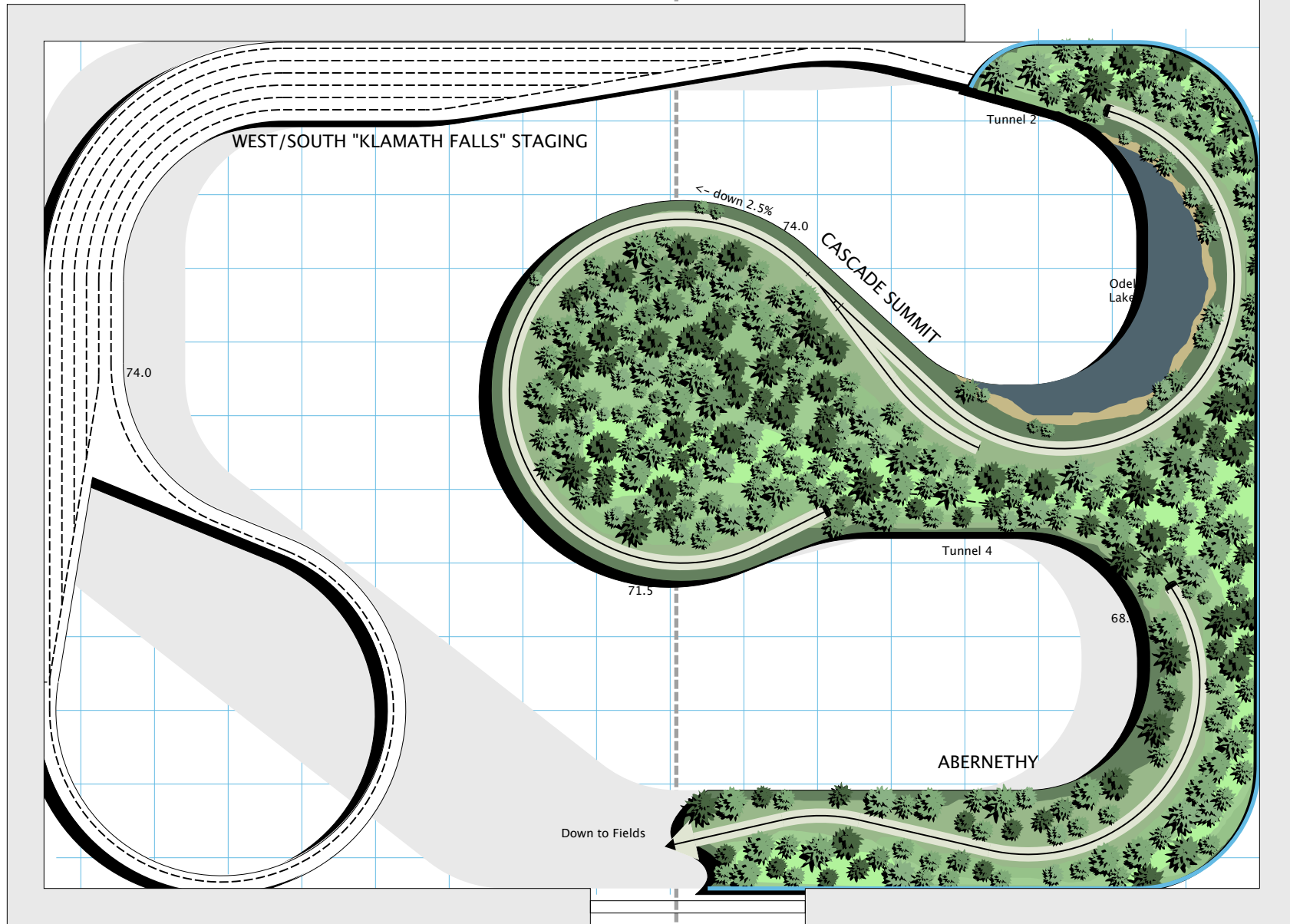
Designed by Robert W. Sprague  
[www.annapolisjunctionrr.com](http://www.annapolisjunctionrr.com)



UP in the Cascades | John Caffarelli | UPPER LEVEL  
 HO Scale | minimum radius: mainline 28", industrial 18" all turnouts #6  
 1/2"=1 foot

Designed by Robert W. Sprague  
[www.annapolisjunctionrr.com](http://www.annapolisjunctionrr.com)

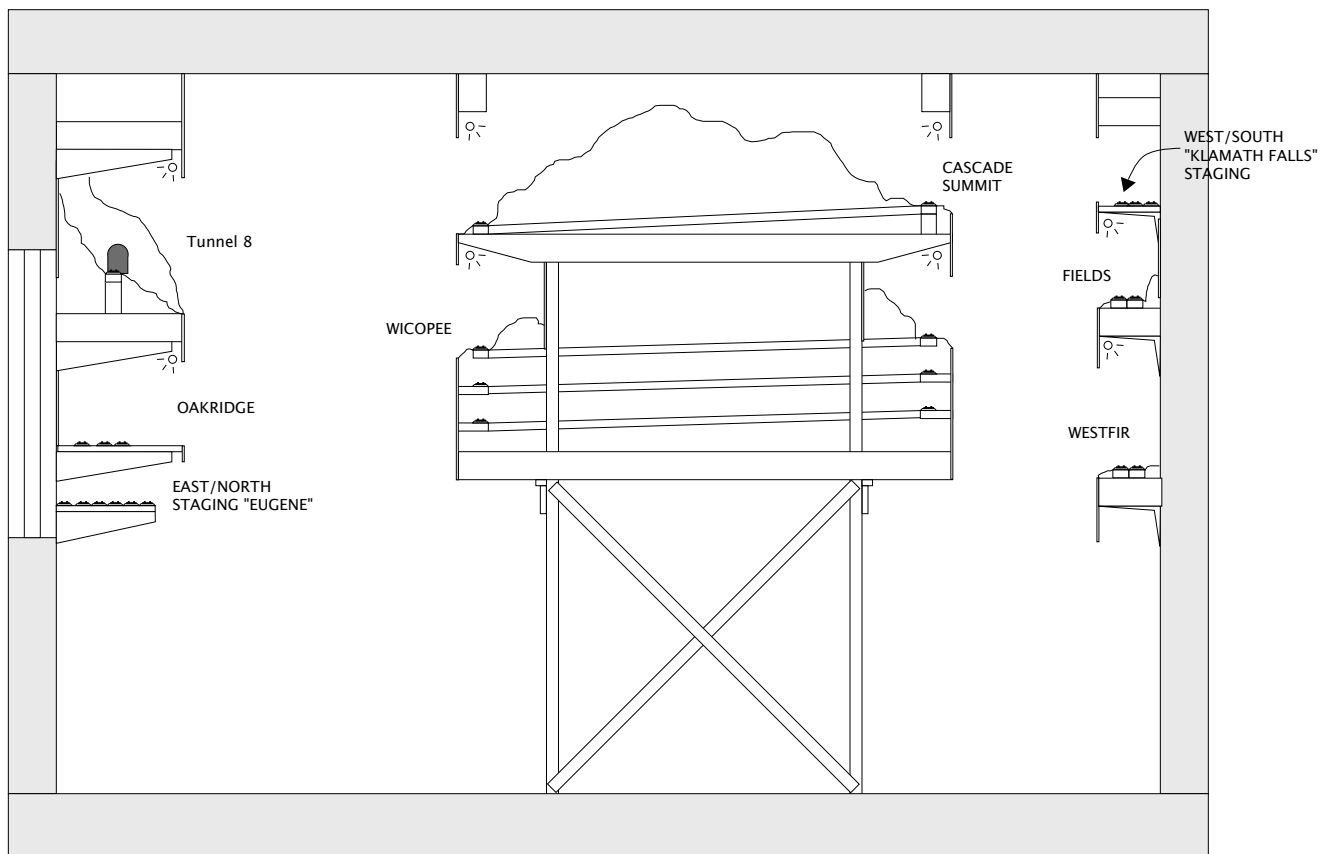
A ←



A ←

UP in the Cascades | *John Caffarelli* | *HIGHEST LEVEL*  
 HO Scale | minimum radius: mainline 28", industrial 18" all turnouts #6  
 1/2"=1 foot

Designed by Robert W. Sprague  
[www.annapolisjunctionrr.com](http://www.annapolisjunctionrr.com)



UP in the Cascades | *John Caffarelli* | *CROSS SECTION A-A*  
 HO Scale | minimum radius: mainline 28", industrial 18" all turnouts #6  
 1/2"=1 foot

Designed by Robert W. Sprague  
[www.annapolisjunctionrr.com](http://www.annapolisjunctionrr.com)