



## SPAIN

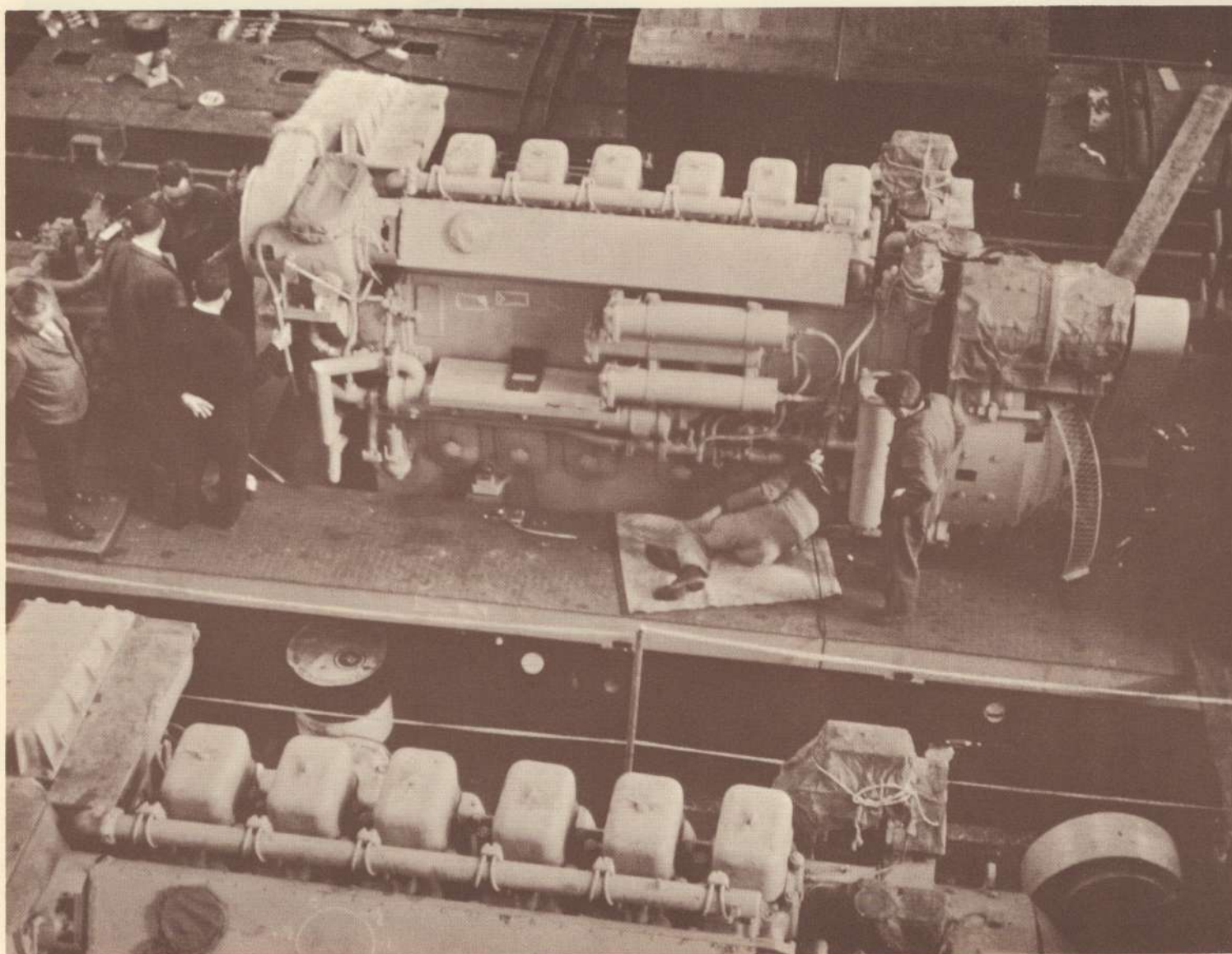
**Licensee: Cia Euskalduna, Madrid, Spain**  
**(In cooperation with CAF — Compania Auxiliar de Ferrocarriles at Besain, Spain)**

This licensee was established in 1958 and activated in 1963 in conjunction with an initial order of 100 mainline ALCO diesel-electric locomotives for Spain's broad-gauge rail system, RENFE. The initial order will be completed in 1967.

ALCO personnel from the U.S.A. have been cooperating very actively in this project, including seven permanently assigned to this program in Spain. The production was accomplished in an Euskalduna plant in Madrid and the C.A.F. plant in Besain.

The following photographs show various production areas in these plants and a selection of completed locomotives.

The Cia Euskalduna plant at Madrid, Spain where Alco model DL-535S diesel-electric locomotives are manufactured.

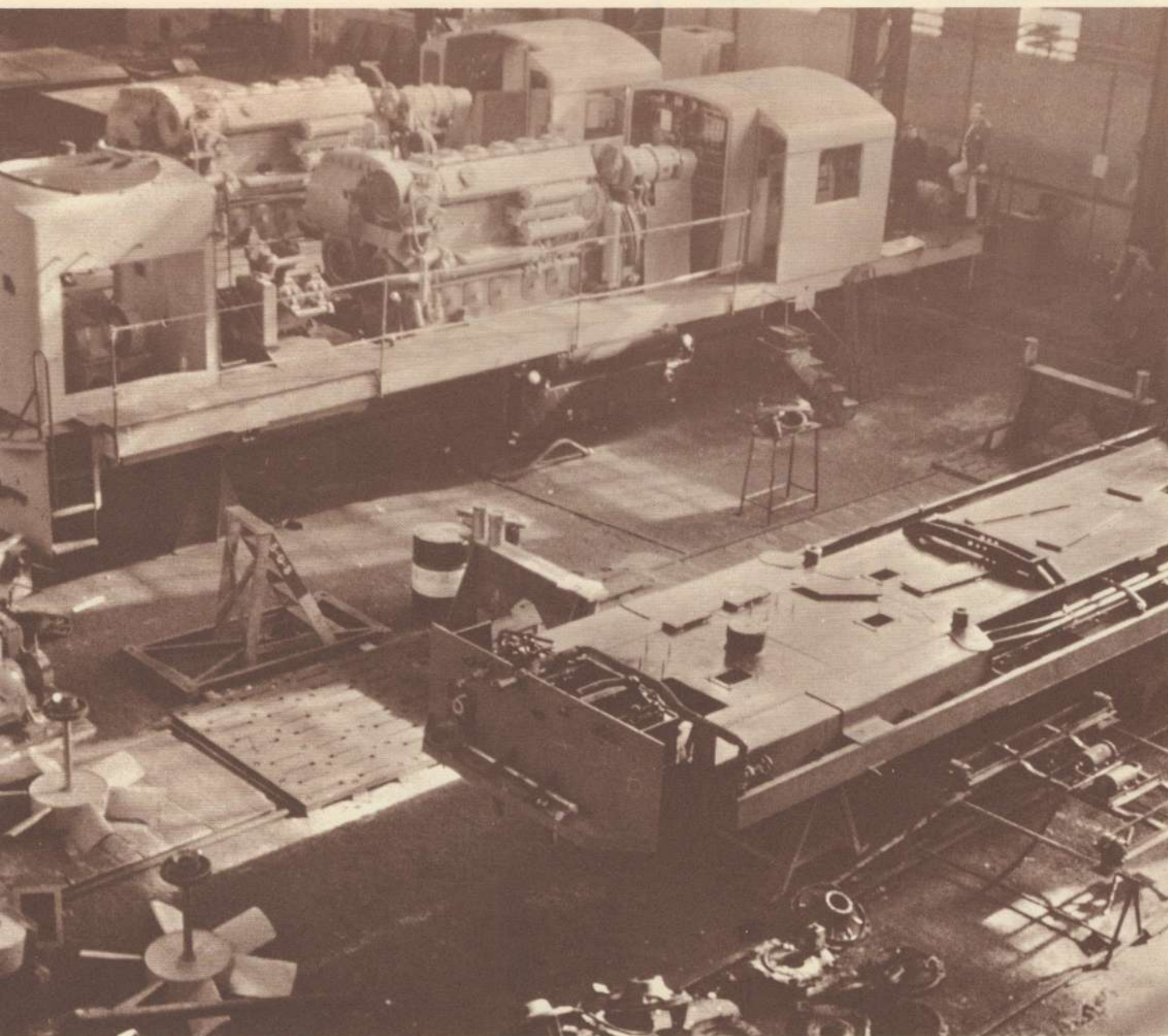


Diesel engine being mounted on the underframe at the Madrid plant.

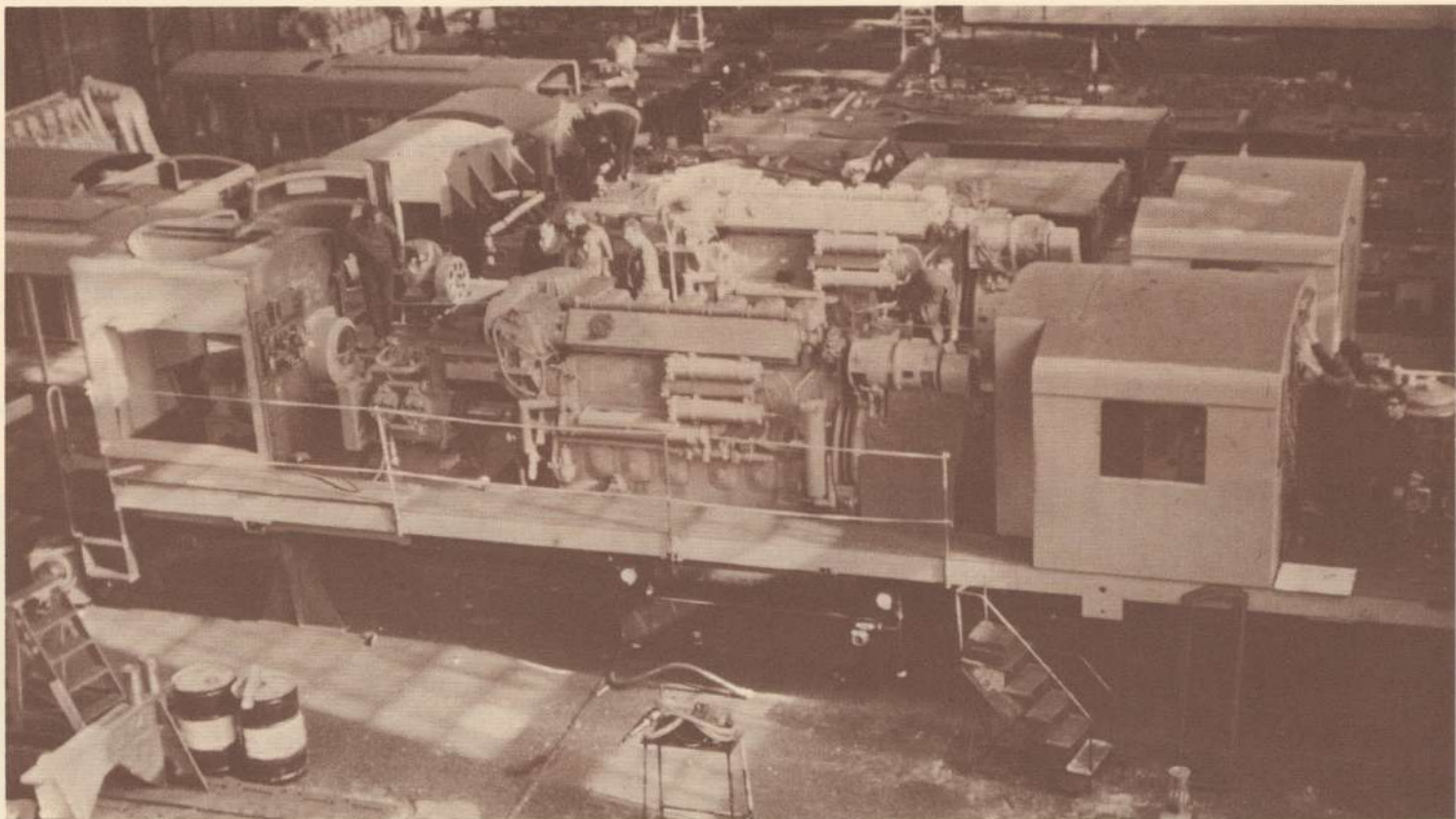


## SPAIN

The Cia Euskalduna plant at Madrid, Spain where Alco model DL-535S diesel-electric locomotives are manufactured.



Beginning final assembly showing inverted underframe in the foreground with piping and electrical cable applied.



At this station at the Madrid plant, locomotives are complete with diesel engines, compressors, cabs, contactor compartments, radiator compartments and steam heat boilers.



Completed locomotive undergoing yard test runs outside of the Euskalduna plant.



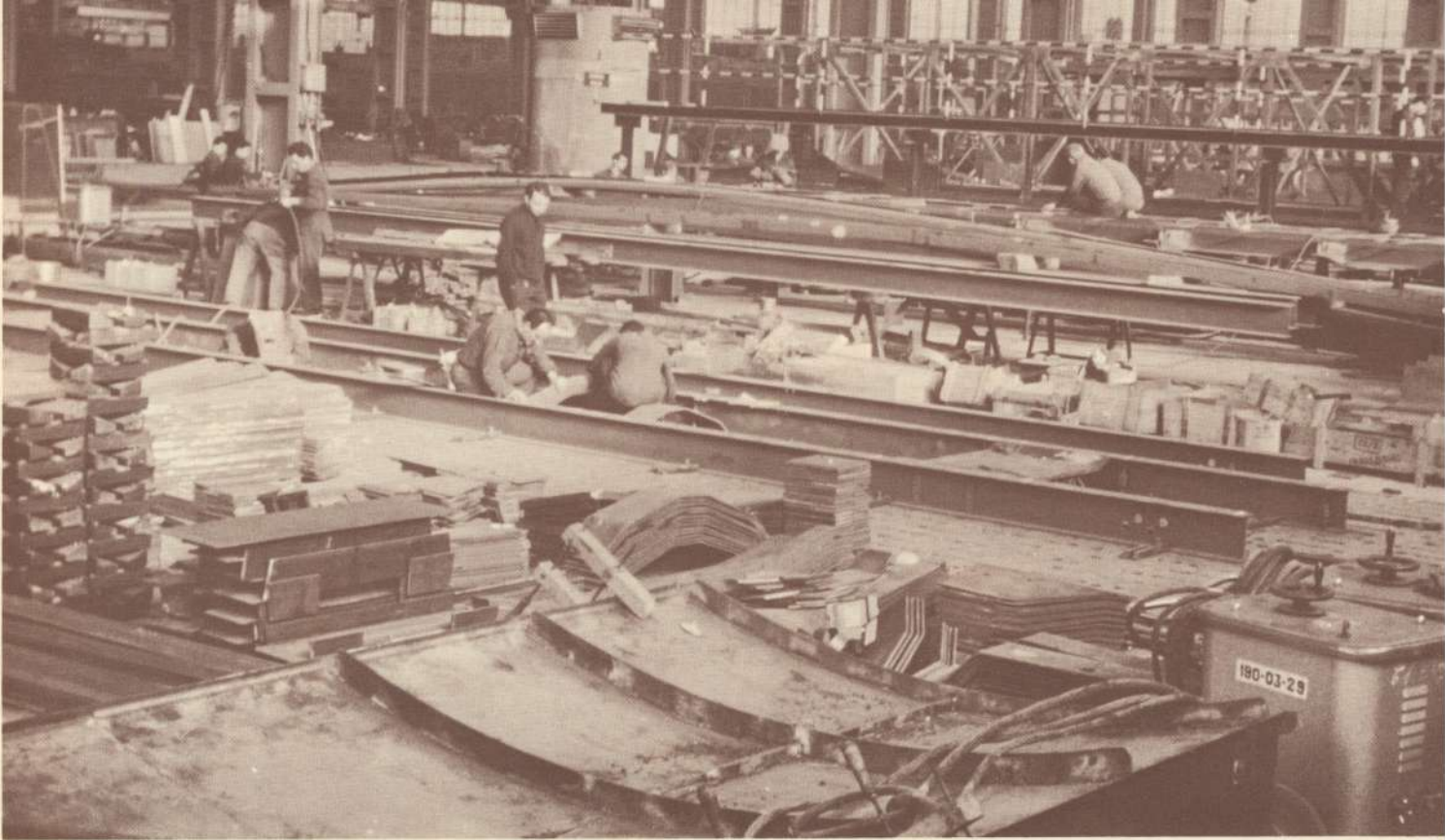
## SPAIN

The C.A.F. (Compania Auxiliar de Ferrocarriles) plant at Besain, Spain, where Alco model DL-500S diesel-electric locomotives are manufactured.

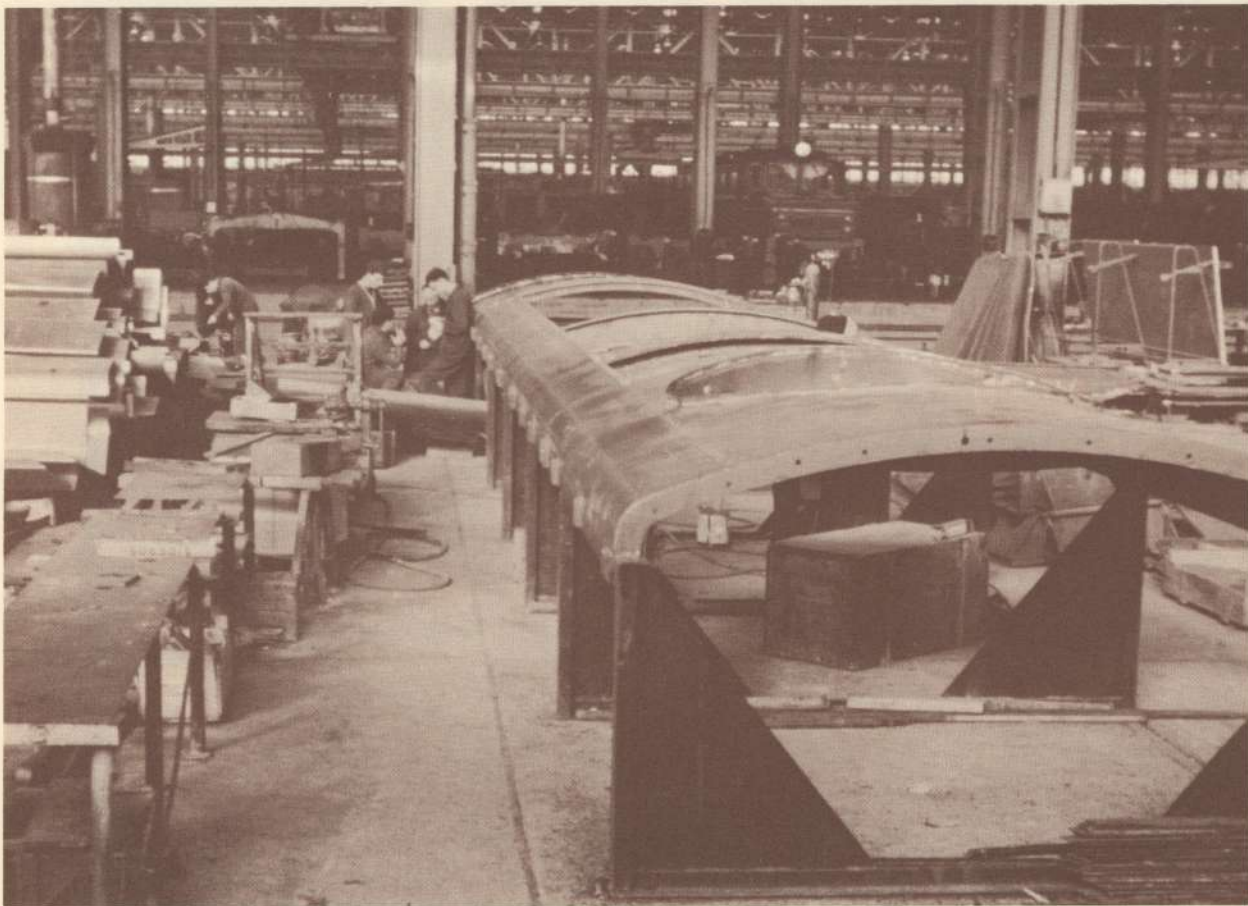


Construction components, pre-fabricated at other locations in the plant, are stored ready for use on the locomotive assembly line at C.A.F.



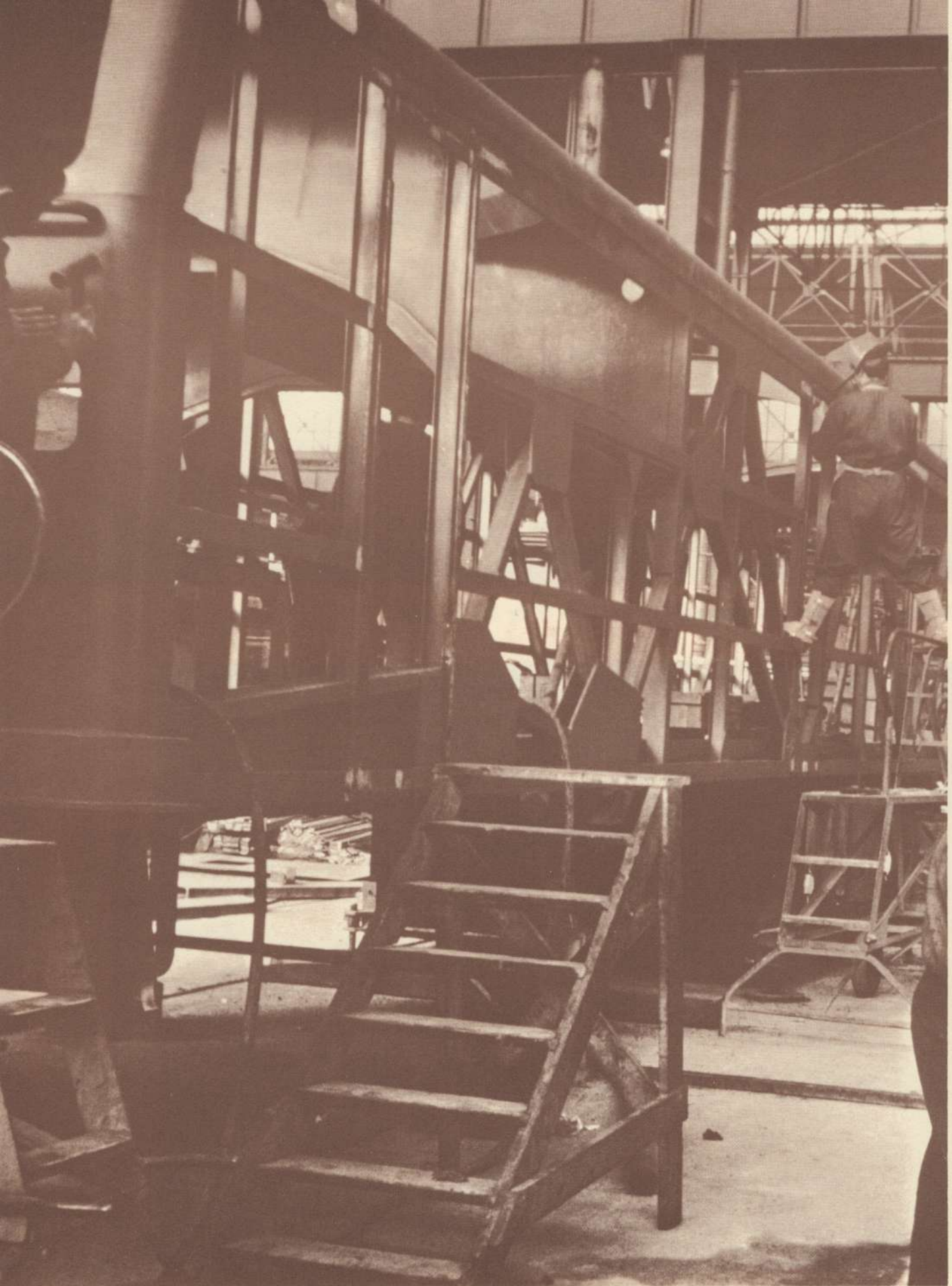


Locomotive floor frames are constructed in this area of the Besain plant.



Roof building jig and view of completed roof section.



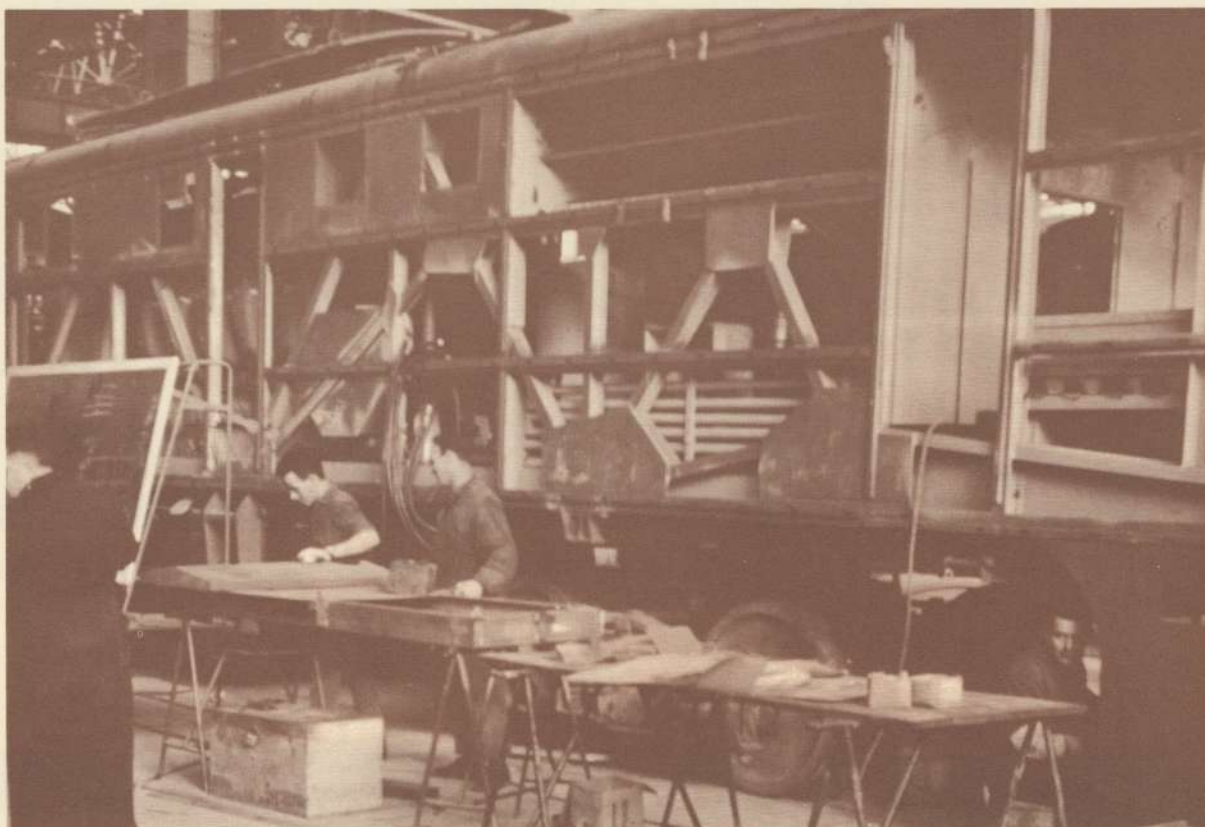


Pre-fabricated components of the locomotive underframe, side trusses, roof and cab nose sections are welded together as a unit.



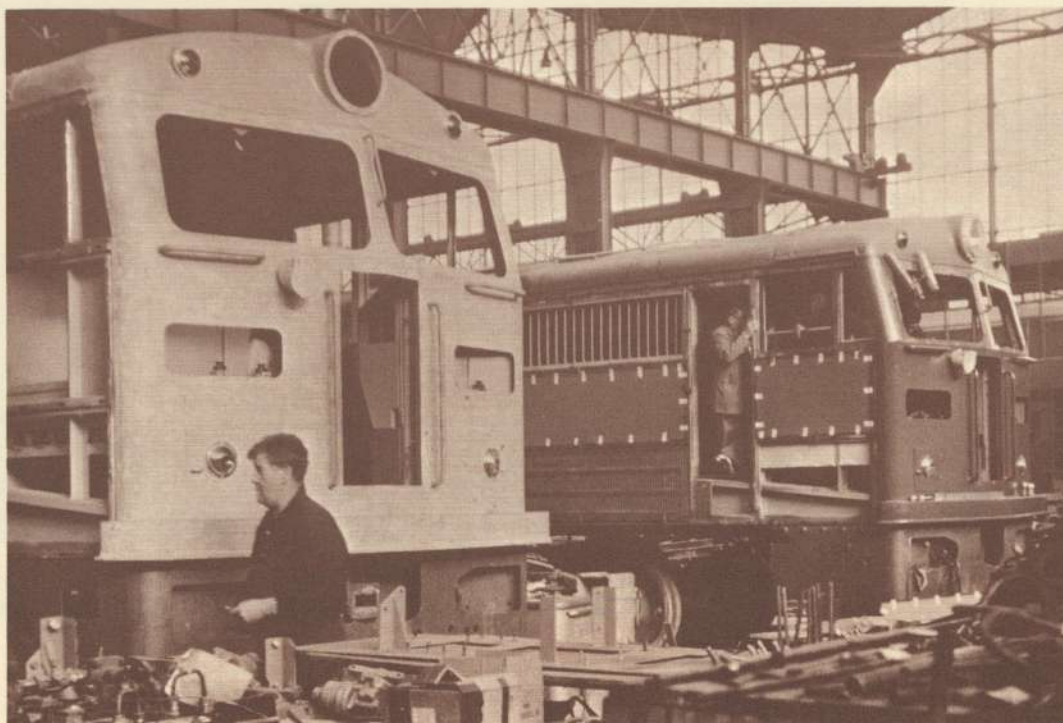
# SPAIN

The C.A.F. (Compania Auxiliar de Ferrocarriles) plant at Besain, Spain, where Alco model DL-500S diesel-electric locomotives are manufactured.



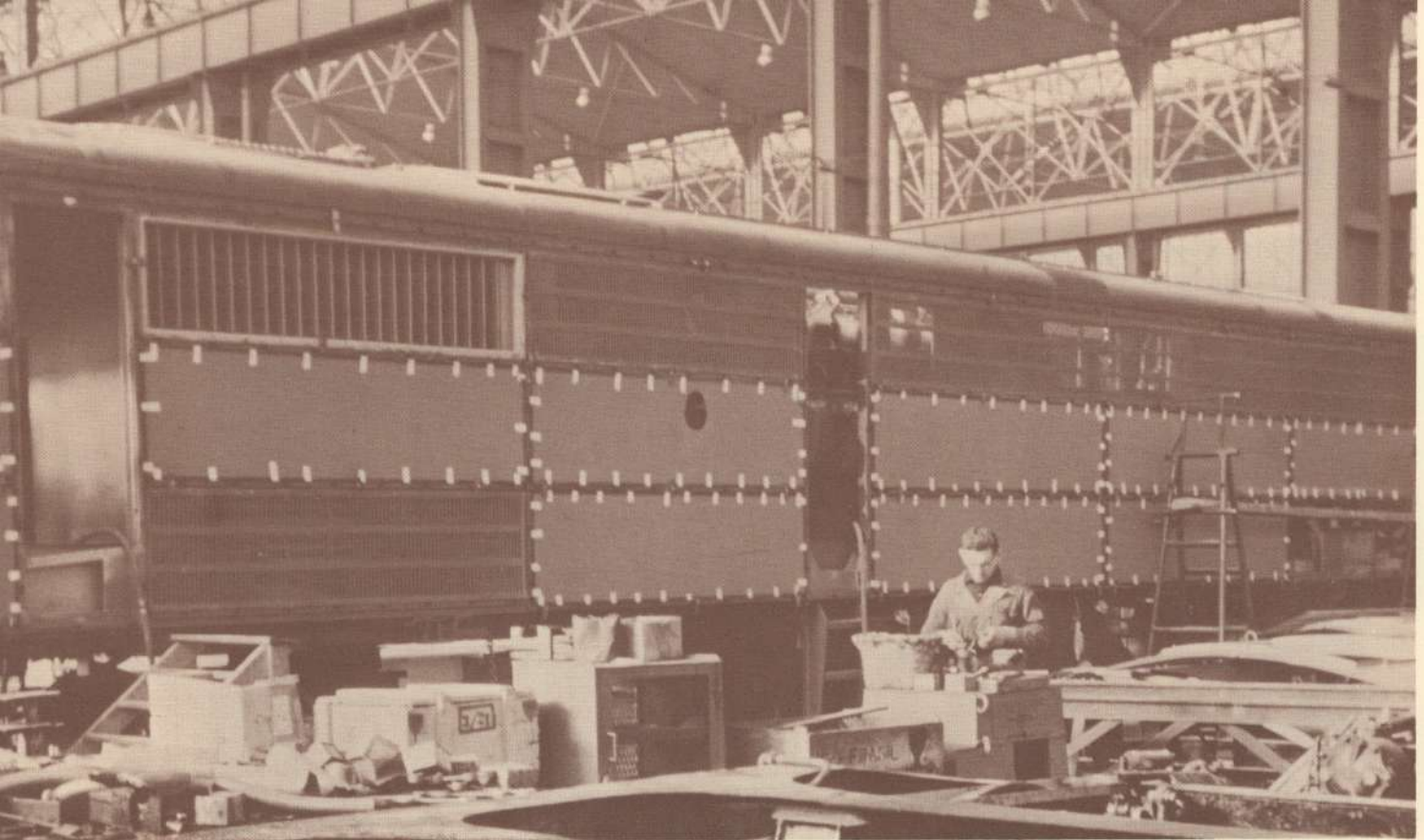
Closing in of the locomotive sides begins at this point in the C.A.F. plant at Besain.

In the foreground, the cab nose, roof and windshields are being fitted in place.

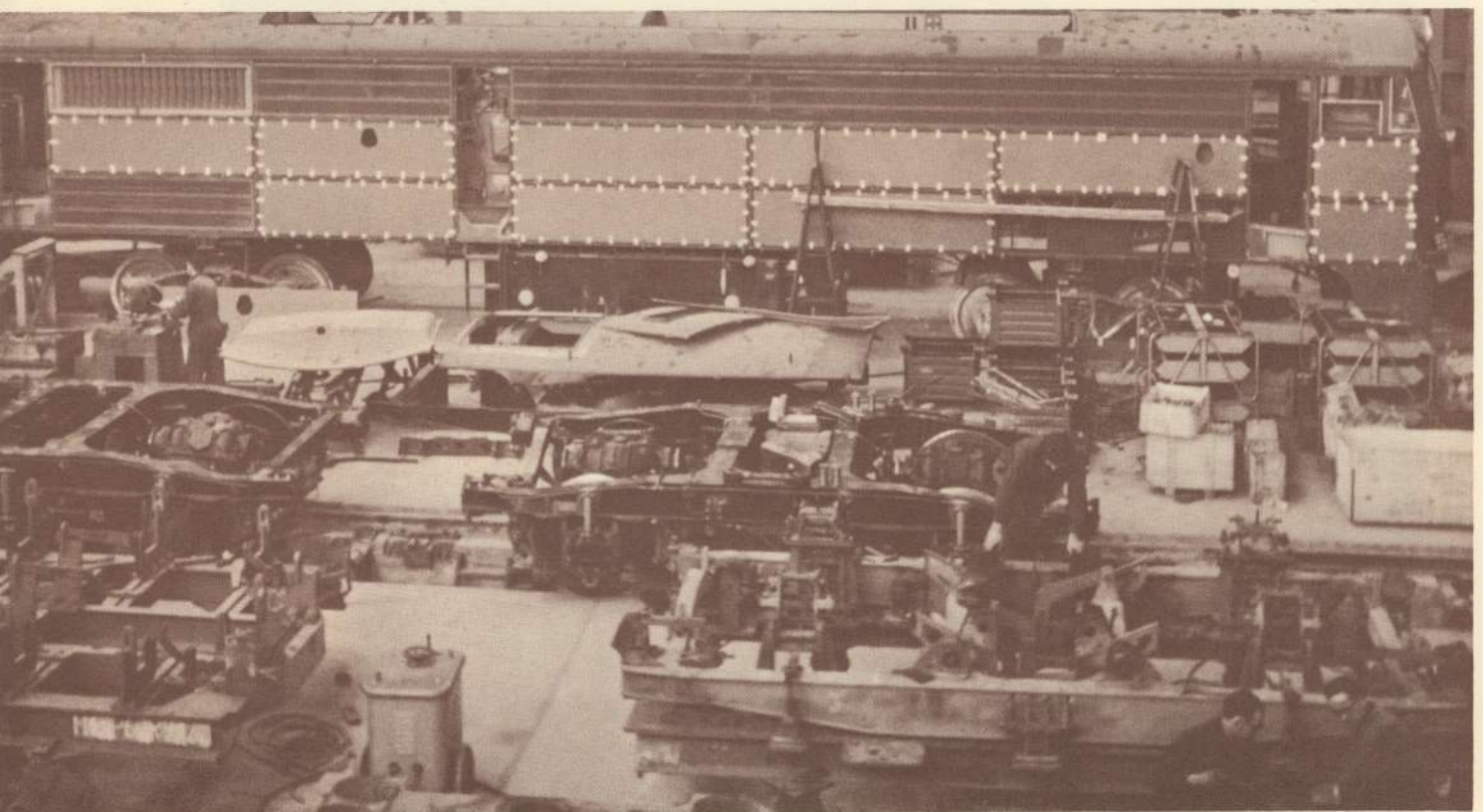


**ALCO**





Locomotive side panels and louvered sections are applied.

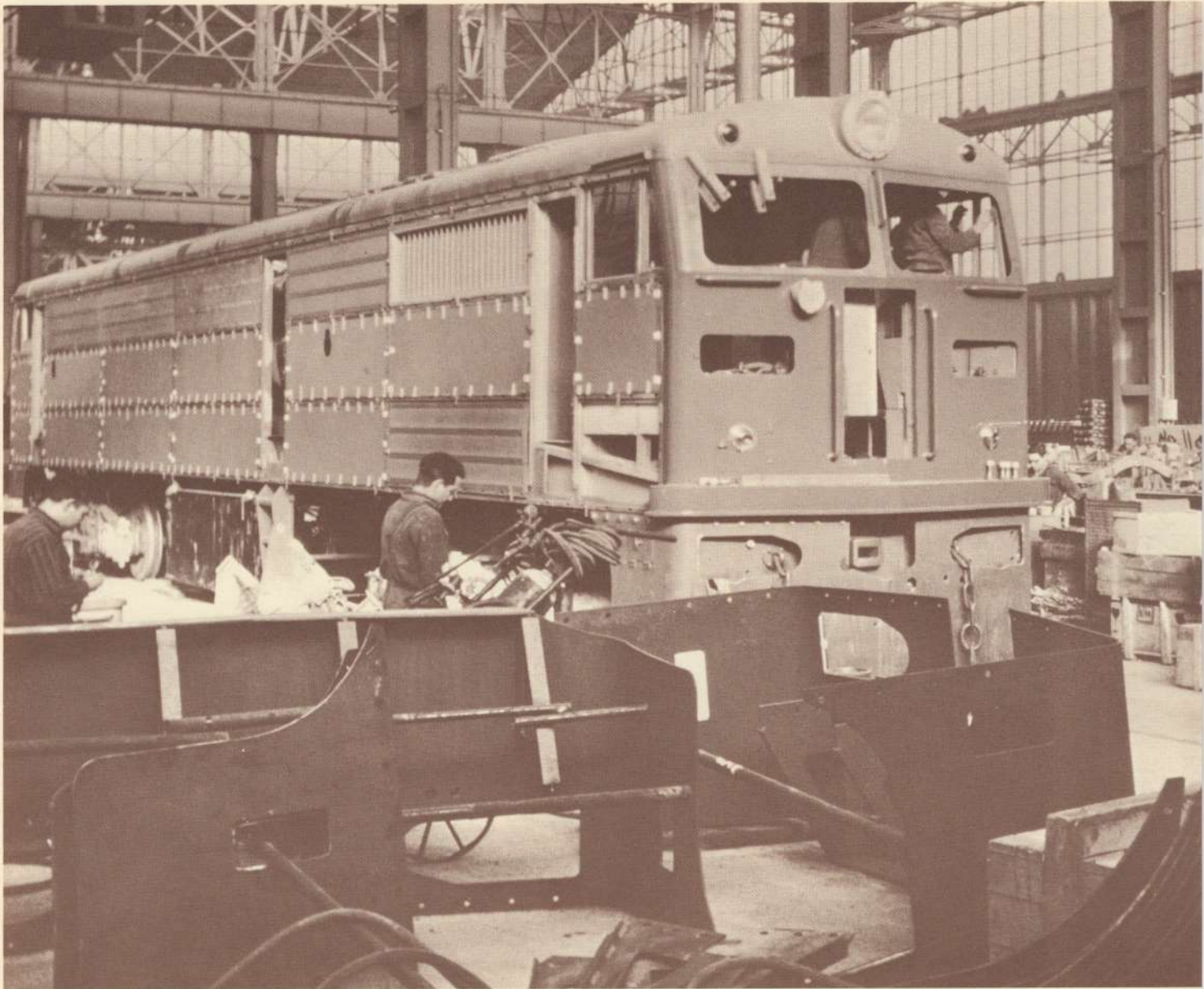


Truck assembly area in foreground. Semi-finished locomotives are in the background awaiting installation of permanent trucks.



## SPAIN

The C.A.F. (Compania Auxiliar de Ferrocarriles) plant at Besain, Spain, where Alco model DL-500S diesel-electric locomotives are manufactured.



At Besain, the closing in of a locomotive nears completion. Pilots are stored in the foreground.



## SPAIN

The C.A.F. (Compania Auxiliar de Ferrocarriles) plant at Besain, Spain, where Alco model DL-500S diesel-electric locomotives are manufactured.

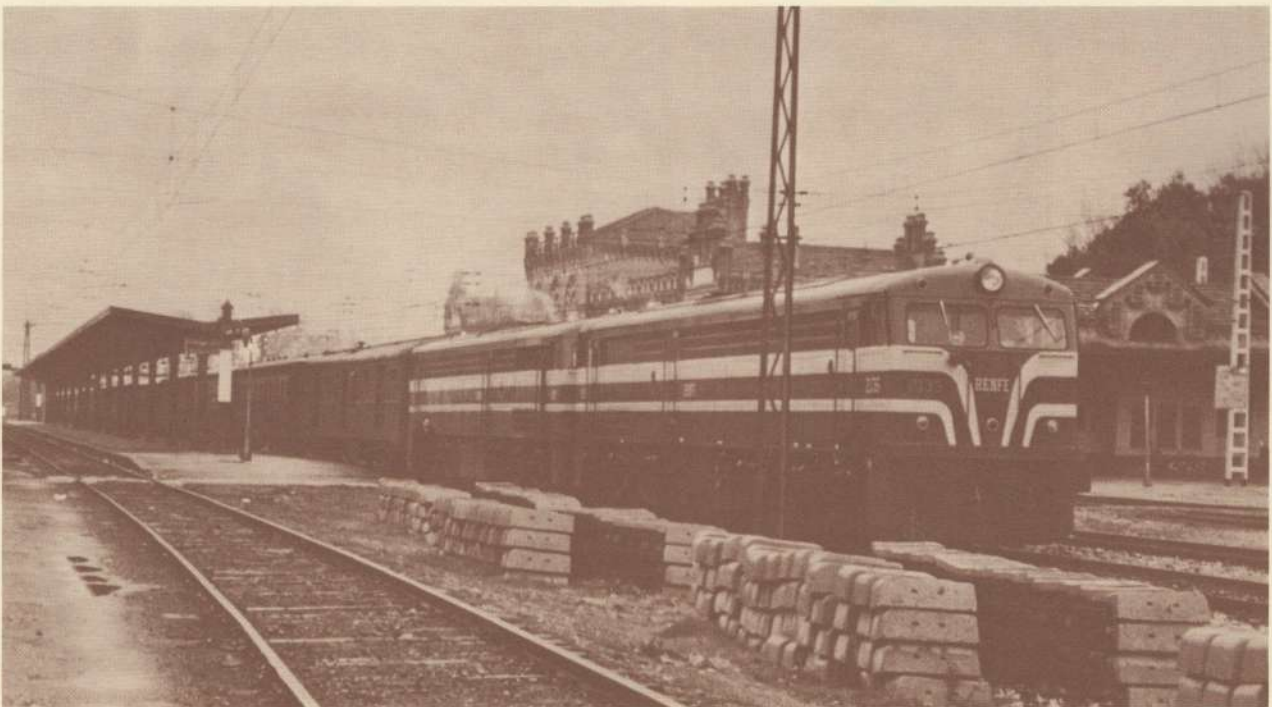


View of locomotive final assembly area at the Besain plant of C.A.F.





Finished locomotive on water box testing station for evaluation of power performance.



Recently completed locomotives on initial road performance tests.