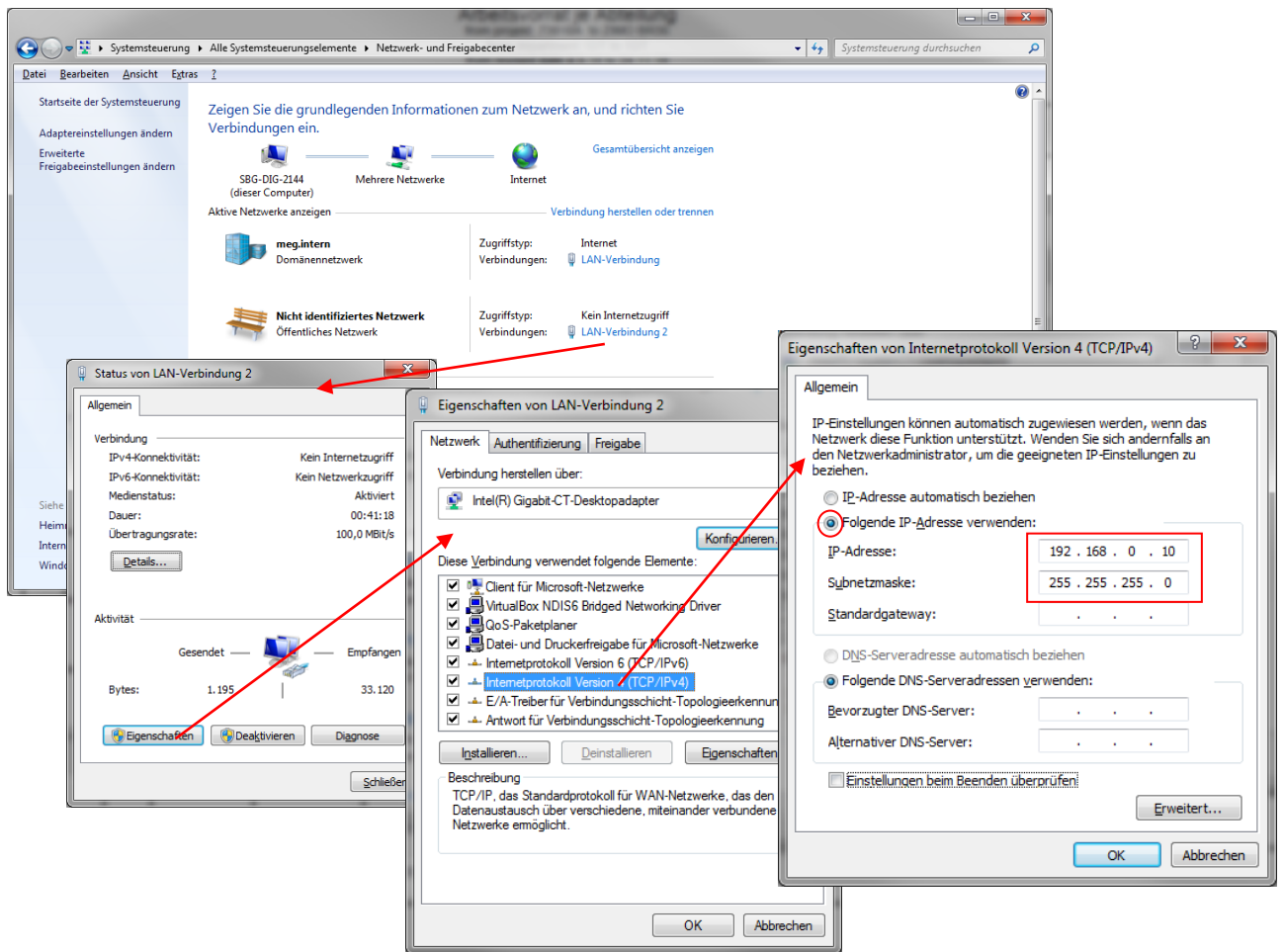


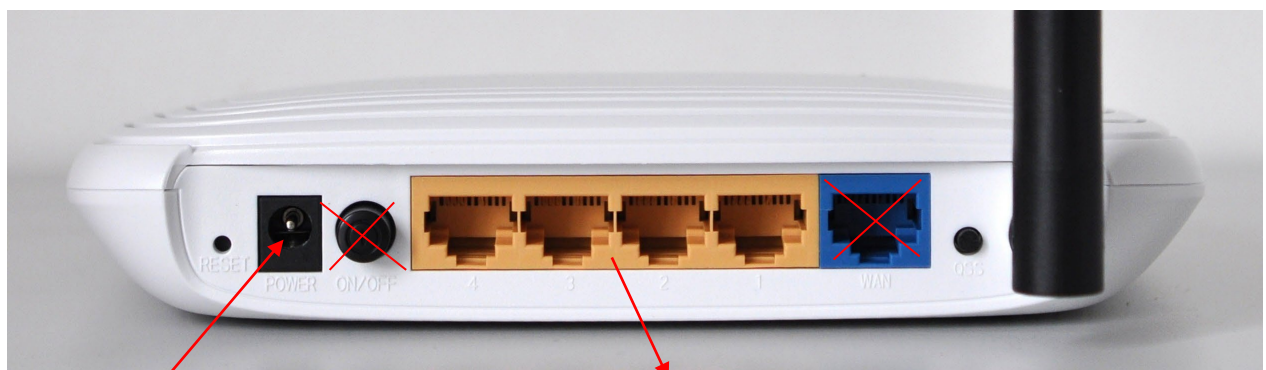
Configuración del router Z21

(Modelo: TL-WR841N)

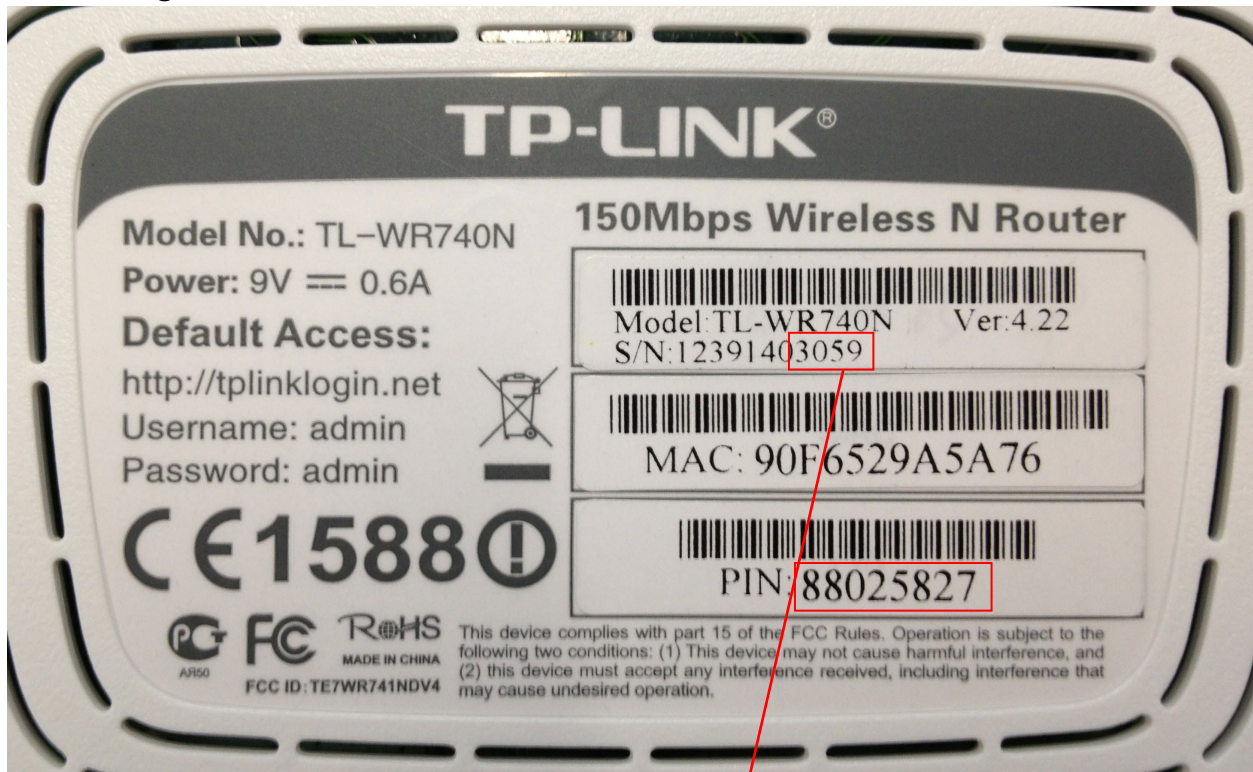
1. ETH de PC:



2. Conexión a PC:



3. Configuración del router:

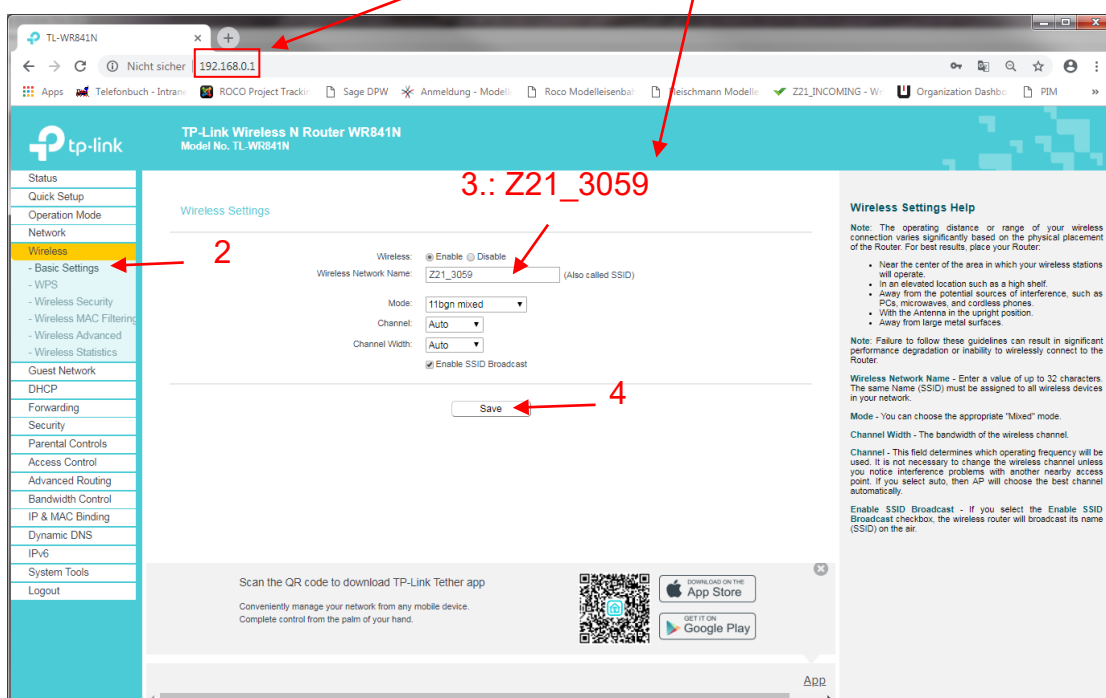


Inicio de sesión y SSID:

Usuario: admin

Contraseña: admin

1. Barra de direcciones: 192.168.0.1



Configuración del router Z21



TP-Link Wireless N Router WR841N
Model No. TL-WR841N

Note: WEP security, WPA/WPA2 - Enterprise authentication and TKIP encryption are not supported with WPS enabled. For network security, it is strongly recommended to enable wireless security and select WPA2-PSK AES encryption.

Wireless Security Help

You can select one of the following security options:

- Disable Wireless Security - The wireless security function can be enabled or disabled. If disabled, the wireless stations will be able to connect to the device without encryption. It is recommended strongly that you choose one of the following options to enable security.
- WPA/WPA2 - Personal - Select WPA based on pre-shared passphrase.
- WPA/WPA2 - Enterprise - Select WPA based on Radius Server.
- WEP - Select 802.11 WEP security.

Each security option has its own settings as described follows.

WPA/WPA2 - Personal Version - You can select one of the following versions:

- Auto - Select WPA-PSK or WPA2-PSK automatically based on the wireless station's capability and request.
- WPA-PSK - Pre-shared key of WPA.
- WPA2-PSK - Pre-shared key of WPA2.

Encryption - You can select either Auto, or TKIP or AES.

Wireless Password - You can enter ASCII or Hexadecimal characters. For Hexadecimal, the length should be between 8 and 64 characters; for ASCII, the length should be between 8 and 63 characters.

Group Key Update Period - Specify the group key update interval in seconds. The value can be either 0 or at least 30. Enter 0 to disable the update.

WPA/WPA2 - Enterprise Version - You can select one of the following versions:

- Auto - Select WPA or WPA2 automatically based on the wireless station's capability and request.
- WPA - WPA-PSK Protected Access.
- WPA2 - WPA2 version 2.

Encryption - You can select either Auto, or TKIP or AES.

Radius Server IP - Enter the IP address of the Radius Server.

Radius Server Port - Enter the port that radius service used. (1-65535, 0 stands for default port 1812)

Radius Server Password - Enter the password for the Radius Server.

WEP

Authentication Type: Open System
WEP Key Format: Hexadecimal

Selected Key: WEP Key Key Type

Key 1: Disabled
Key 2: Disabled
Key 3: Disabled
Key 4: Disabled

Save

TP-Link Wireless N Router WR841N
Model No. TL-WR841N

System Reboot

Click Reboot to restart the device without applying any changes to your current settings.

Reboot

Enable Auto Reboot: Disable

Save

Reboot Help

Click the Reboot button to reboot the device.

Auto Reboot Time

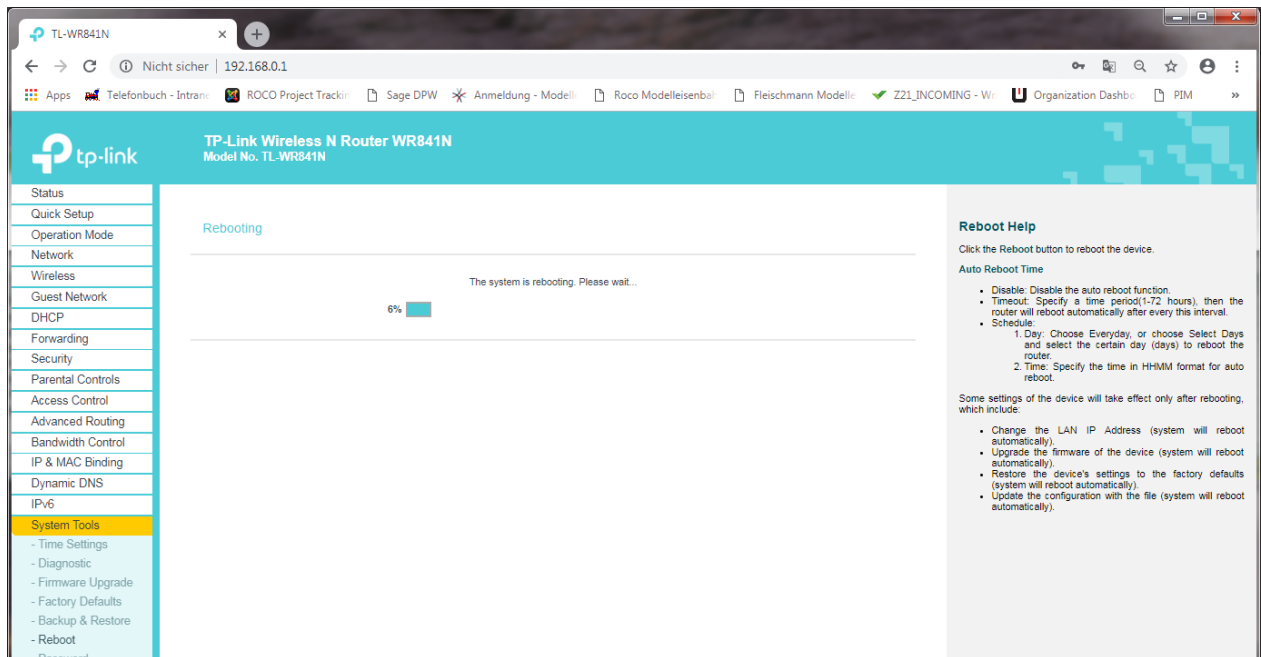
- Disable: Disable the auto reboot function.
- Timeout: Specify a time period (1-72 hours), then the router will reboot automatically after every this interval.
- Schedule:
 - 1. Day: Choose Everyday, or choose Select Days and select the certain day (days) to reboot the router.
 - 2. Time: Specify the time in HH:MM format for auto reboot.

Some settings of the device will take effect only after rebooting, which include:

- Change the LAN IP Address (system will reboot automatically).
- Upgrade the firmware of the device (system will reboot automatically).
- Restore the device's settings to the factory defaults (system will reboot automatically).
- Update the configuration with the file (system will reboot automatically).

Configuración del router Z21

Espera:



Si se muestra la siguiente pantalla después de 20-30 segundos, la configuración se realizó correctamente.

